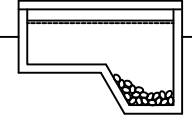
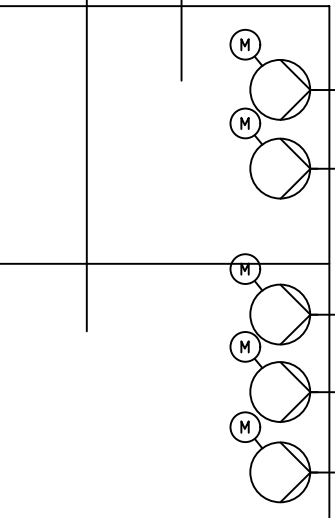
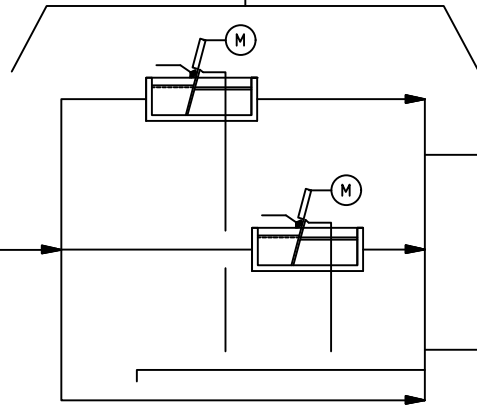


FROM KIRYAT SHMONA



STONE TRAP (AT OLD P.S. LOCATION)
NUMBER 2
VOLUME EACH 40 (m3)

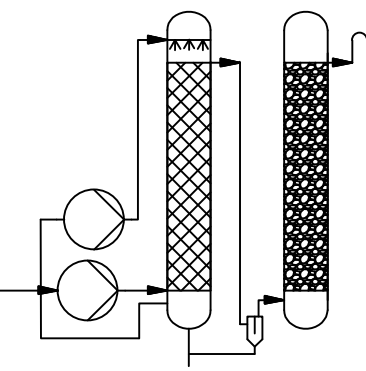
BAR SCREEN
NUMBER 2
CAPACITY EACH 550 (m3/h)



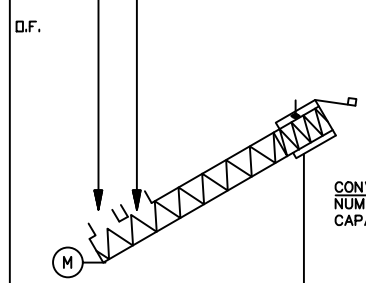
WET WELL
NUMBER OF CELLS 2
VOLUME EACH 60(m3)

WASTEWATER PUMPS
NUMBER 2
TYPE SUBMERSIBLE, WET INSTALLED
CAPACITY EACH 300 (m3/h)
HEAD EACH 20 (m)

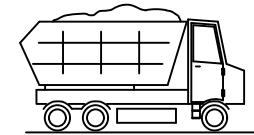
WASTEWATER PUMPS
NUMBER 3 (2+1)
TYPE SUBMERSIBLE, WET INSTALLED
CAPACITY EACH 200 (m3/h)
HEAD EACH 20 (m)



AIR TREATMENT UNIT
NUMBER 1
TYPE AC + BF
CAPACITY 2000 (m3/h)
BLOWER TYPE CENTRIFUGAL



CONVEYOR COMPACTOR
NUMBER 2
CAPACITY EACH 4(m3/h)



SCREENING CONTAINER
NUMBER 2 (1+1)
CAPACITY EACH 24(m3)

TO PRE TREATMENT

TO EQ. TANK

© 2014, DHVMED LTD. All rights reserved. This drawing is the property of DHVMED LTD. and is not to be used for any other project without the written consent of DHVMED LTD.

מס' תאריך	28.07.21	מס' ח.ת.נ.	1
תכנון	א.א.י.	שרטוט	א.א.י.
בכ"ר	אשר	בכ"ר	אשר
מס' תאריך	28.07.21	מס' ח.ת.נ.	1
תכנון	א.א.י.	שרטוט	א.א.י.
בכ"ר	אשר	בכ"ר	אשר
מס' תאריך	28.07.21	מס' ח.ת.נ.	1
תכנון	א.א.י.	שרטוט	א.א.י.
בכ"ר	אשר	בכ"ר	אשר
מט"ש קריית שמונה			
שם התכנית:			
PFD-4 Pumping station			
levels in:	drawing size	project number	
measures in:	A3	1135	
scale: -			
file number	drawing number		
1135-11-00-004	1135-11-00-004		

